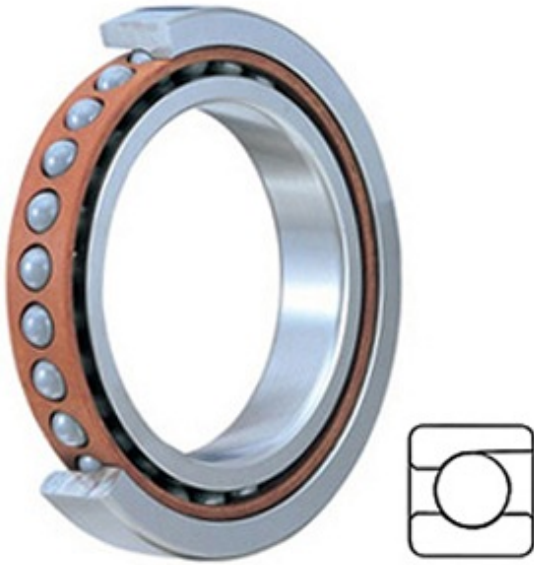




## Bearing industry co., Ltd.



1.378 Inch | 35 Millimeter x 2.441 Inch | 62  
Millimeter x 0.551 Inch | 14 Millimeter TIMKEN  
2MM9107WI Precision Ball Bearings

Bearing No. 2MM9107WI

2MM9107WI Bearing 2D drawings and 3D CAD models

Category	Precision Ball Bearings
Inventory	0.0
Manufacturer Name	TIMKEN
Minimum Buy Quantity	N/A
Weight	0.159
EAN	0087796072206
Product Group	B04270
Enclosure	Open
Precision Class	ABEC 7   ISO P4
Material - Ball	Steel
Number of Bearings	1 (Single)
Contact Angle	15 Degree
Preload	None
Raceway Style	1 Rib Outer Ring
Cage Material	Phenolic
Rolling Element	Ball Bearing
Flush Ground	No
Inch - Metric	Metric
Other Features	Single Row   Angular Contact   Super High Precision
Long Description	35MM Bore; 62MM Outside Diameter; 14MM Width; Open Enclosure; ABEC 7   ISO P4 Precision; Steel Ball Material; 1 (Single) Bearings; 15 Degree



## Bearing industry co., Ltd.

	Contact Angle; Phenolic Cage Material; 1 Rib Outer Ring Rac
Category	Precision Ball Bearings
UNSPSC	31171531
Harmonized Tariff Code	8482.10.50.28
Noun	Bearing
Keyword String	Angular Contact Ball
Manufacturer URL	<a href="http://www.timken.com">http://www.timken.com</a>
Manufacturer Item Number	2MM9107WI
Weight / LBS	0.35
d	1.378 Inch   35 Millimeter
D	2.441 Inch   62 Millimeter
B	0.551 Inch   14 Millimeter
d - Bore	35 mm
D - Outer Diameter	62 mm
Bearing Width	14 mm
do - Ball Diameter	7.937500 mm
C0 - Static Radial Rating	13700 N
Ce - Dynamic Radial Rating <sup>1</sup>	21200 N
Limiting Speed (Grease)	22600 rpm
Limiting Speed (Oil)	45200 rpm
Ball Type	STEEL
Cage Type	CR - Phenolic Outer Land Riding Cage
Bearing Weight	0.151 Kg
Design Units	METRIC
Full Timken Part Number	2MM9107WICR
R - Inner Ring To Clear Radius <sup>2</sup>	1.0 mm
r - Outer Ring To Clear Radius <sup>3</sup>	1.0 mm
da - Inner Ring Backing	40.600 mm



## Bearing industry co., Ltd.

Diameter	
Da - Outer Ring Backing Diameter	56.600 mm